

# LYASHI

## Lya Mu Northern Province

KASAMA, AUGUST 1953

PRICE, ONE PENNY.

### Kutandala Kwa Bwana Kafinala Pa Kasama

Bwana Governor Sir Gilbert Rennie, K.C.M.G., M.C. atikile ku Kasama mu ndeke ukufuma ku Lusaka pa 5th May, ukwisa ikala nshiku shimono muno chalo cha Northern Province. Bwana Provincial Commissioner Mr. M.G. Billing, na ba Bwana be Boma abakalamba pamo naba ba Bwana baile mukumanya ku Chibemba cha ndeke. Chilya bapwa ukulya unch na Bwana Provincial Commissioner, Bwana Governor hamonene na ba Bwana bambi mu milimo ye Boma yalekana lekana no kulanda nabo ku Boma. Nshila sha kwimishamo imilimo afifulo iyalekana lekana ifibombela i Boma shalilandilwe. Bwana Governor alimilimo no kutandala konse mu Kasama mu motoka ukumona amakule yonse na mayanda ya ba Bwana, na mayanda ya bena Africa ayakulwa ukufuma pa kachita kantu Bwana Governor afumine unno mu mwaka wa 1951. Bwana Governor atemeuwe ichibi pakumone ng'anda a kwa Lesa (Church) ipya pe sukulu e mipompi ya menshi ipya iyo bachita nakati ka mushi mu Kasama umwikala a Bwana, no kumona amayanda aya musungo upya ayo bakulila ba Bwana na bena Africa. Kabili aile ku kumona umushi wa Association ne Ng'anda ya mangalo.

#### Bwana Governor Aya Kwa Chitimukulu

Pa 6th May Bwana Governor ku nusumba ku mushi wa Mfumu ba Chitimukulu mukuya landa ne Mfumu pamo nabena Chilonganano cha Nchenje. Abena Chilonganano cha Nchenje bonse epo bali lelo kanofye umu wa Bakabilo, ishina Nkolemambwe, usalipo, uwaile ku mushi kwa Mfumu Chikwanda mu Mpika, ku kuya losha a Mfumu Kanyauta inkashi yaba Chitimukulu. Bwana Governor alimwene makule yanya nelyo bapima mushi, kabili ilyo balanda itintu ifikalamba, Bwana Governor alisalifye Mfumu pamo na Kabilo (Kalemba) Lakement N'andu pa wenshya ubuteko bukalamba ubwa Bwama bwa Babemba bwino bwino ukuma pa kashita kantu Bwana Governor afumine kuno pa ntaushi.

Iyo bapwile ukulya (unch) pa lupili apo babula amabwe yapaputala (imilimundubwi) pakati uku Katiungu noku a Malole, Governor aile mona isukulu ne milimo ya bulimi ne milimo basungilamo impanga ku Malole. Kabili aile mona ne fishiba fye sabi ifyo ba'eimbi makuti ba Bwana ba Mission na batumendo be Sukulu bakakwate isabi libishi ilya kulva ilingi.

#### Bwana Governor ba monene Ne Mfumu Kasembe

Pa 7th May Bwana Governor hamone ne Mfumu nkalamba Kasembe wa Luunda uwafumine ku Kawambwa mu chalo cha Luapula ku kulanda nankwe. Mfumu Kasembe atwele insalu sbyakwe ishya Bufumu kabili ali pamo ne Mfumu Kanyembo na ba Kabilo ba Bufumu bwa ba-Luunda abo bali ne ntungulushi yabo ishina Ashford Mwaba. Bwana Governor aile ku mushi bakulila abafiba shi, elyo kulya kwine aile landa ne Mfumu Mwamba pamo na ba Kabilo ba Mfumu Pa kubwelela ku Kasama, Bwana Governor aile mona ng'anda ya bwangalo iya ba Bwana, kabili aile tendeka nokuta umupila, panuma aile ku kutamba ichila cha chi-Luunda icho abashite ne Mfumu Kasembe balechinda ku Boma.

Pa 8th May Governor aile mona ibala lya mbuto suipya ishya Chisungu pamo ne chishiba che sabi ku Misamfu, bali pamo na Provincial Commissioner na Bwana mukalamba wa bulimi, Provincial Agricultural Officer, ishina Mr. Allan. Iyo abwelele ku Bema, kwali ichi longanano, napa chilonganano chine chi epo papele umulumendo umu ishina iyakwe ni Weston Mulenga Sambeza imendulo pamo na kalata wa kumusalifya pa milimo ikalamba iyo abombela Iboma pa myaka amakumi yatatu.

Iyo apwile ukulanda amashiwi yambi na Bwana Provincial Commissioner, Bwana Governor alimilimo uku uma ku Kasama no kuya mu ndeke ku Lusaka pa nshita ya 11.30 a.m. uluchelo.

### UKULONDOLOLA

Ndetontonkanya ukutila chilefwaikwa ukuti ili pepala iyapilibulwa mu Chibemba. Ndetontonkanyapo iushita shimo ukutila ubwafya bulipo kwakuya lemba ilyashi, nomba natusanga ukwakuya lemba nokuteyanya natuteyanya naba ku Lake Press ku Mbala.

Nachisubilwa ukuti ilyashi lyonse likaba ilya buseko ku bantu bonse abaikala mu chiputulwa cha "Northern Province." Nomba icho tuletontonkanyapo nikuli abo abekala mu mishi pamo pene nabo bekala no kubomba mu matauni atemwa abo ababomba mu misamba. Kabili ilyashi line ili talili iyakufunda abantu fimbizi, Iyena iyakute lileleta fyonse ifilepona mu nchende shonse isha mu chalo cha "Northern Province", iyakweba abantu ifyachine pakuti belasunna iyabufi nangu ifilelandwa ifishili fyachide. Nechakulekelesha chakulondolola ifyo ba Bwana ababomfi ba Kamfulumende belechita abaleysha ukutwala ichalo pantanshi mu milandu ya bulimi, ukabaka bwino ing'ombe nangu mukubaka imiti.

#### Ifilechitwa na Government

Fingi ifilechitika na Kamfulumende pa nshita ino ifyo abantu abena-Africa bashishibe. Natumone ngefi Kamfulumende aleposa indalana ishingira sana pa kuwanya umusebo wafuma ku Mpika ukuya ku Tunduma. Kabili chimbi cha makanta uufuma ku Rukwa tuyo uwapaiwa naba Bwana ababomfi ba "International Red Locust Control Service" ababa pa Mbala. Kabili mu milimo wa bulimi ba Bwana babili nabakafwa abakwangalia basano balitumwa kuno chalo cha "Northern Province": kabili umwaka no mwaka balatuma bakapitao babulumi ukufuma ku sukulu lya pa Lunzuwa. Kabili kuli ukubombesha pakuchita amabala yama sukulu pakuti abalumendo nabakashana basambilile imilimine isuma ilyo bachili baiche.

Ifi efintu fimo fimo ifyakulanga ifyo Kamfulumende alachita pali ino nshita. Mu lyashi likalalembwa tukalamweba ifya chine mu milandu yonse pakuti pabe ukumfwana kusuma pakati ka Kamfulumende ne sha-Mfumo nabantu bonse.

Ukubombesha sana ekulefwaikwa ukubalilapo pakuti abena Africa abali mu mishi babe no bumi busuma ukuchila. Echalenga aleni natubombele pamo.

M.G. Billing, Provincial Commissioner,

## Bwana Secretary for Native Affairs na Provincial Commissioner Pa Mumana.

## Fishibisho.

Bwana Secretary for Native Affairs na Mama Bush pamo na Bwana Provincial Commissioner na Mama Billing elyo na Bwana District Commissioner wa ku Fort Rosebery, Mr. Frost, baile enda nomba line mu nika ya Bangweulu. Ukwendo ulu lwatendeleke ku Lake Chaya, elyo ne humba ili lya endeke ukupita ku Nsalushi. Ncheta na ku Lake Chali ukwabukila ku Kasenga mu chimana cha Luapula. Nchito yakwimba ichimana mupepi na ku Nsalushi na ku chishi cha Katongo yalibombwa fye bwino bwino, ne Mfumu Kasoma na Kalimankonde basosele ukuti chalo chikalamba sana nomba nachifuma mu menshi elyo nokulimwa chakula limwa.

Bwana Secretary for Native Affairs aile ku Twingi Mission, nokwenda aendele mu lulamba lwa kwisamba lya Lake Bangweulu nokutandalile chifulo che Boma pa Samfya, ne mshoni ya pa Lubwe na Kasaba, elyo no mushi wa Mfumu Mwewa.

## Lyashi Lyafuma ku Abercorn

Pakutendeka kwa mweshi wa April Infumu shonse, bashi-Chilye naba bomfi bambi mu buteko bwasha Mfumu bali ne chilye pa Abercorn. Iyo bapwile ukulanda milandu yafuma nobuteko bonse baile ku Lunzuwa nokwikalako inshiku shibili nokwenda pa chifulo chonse ukulangwa umo basambila ing'ombe, ng'ombe impanga nomwakutekela inkoko, inshila yakuliminamo "coffee" ne filyo fimbili, kabili balilangilwe in'asasu sha chisungu. Inshita ya bushiku balangilwe ifikope fya bulimi ne chikope chimbi chabalanngile ifya buteko bumo ubwa Mfumu ina-Africa. Ukupelweshia baposele ichungulo chonse ukumona ifyo abana bale-sambilila mu sukulu, nokumona amangalo pamo pene no mpila. Batemenwe nganshi kabili nachibafwa ukusambililako inshila ishisuma nokushibaka.

Ukufuma pa bushiku bwa 18 ukufika pa 28 umweshi wa May kwali ukulongana kwa bana ba sukulu impendwa yabo yali 82 kabili bafumine mu masukulu 9. Balongene pa mushi pa Nsangu. Kwi sukulu ne sukulu kwafumine kafundisha umo. Uwali intungulushi ni Bwana R. L. Knight uwapa Kawimbe pamo pene naba D. S. Mukupa, B.E.M. ba J. Chikoti, ukulanga abenamishi ifyo bengawanya imibele yabo mukuyafwa abene. Umulimo ukalamba uwaliko kwinda mu folo nokuchita "Dani" ukwafwa abakala mu mushi

Mu lyalo fimo abalondo be sabi bamo bachili bale un'fwa amashiwi yakutampa ayalelandwa elyo nabaleka nokusunkela masumbu yabo aye sabi. Lelo abantu abakalamba bene nabashiba ukuti ukukaa un'fwa mafunde kuleta fye amachushi mu chalo kabili nokuchefye ndalama sha mu chipawo cha mu Native Treasuries. Ukufuma kulya Bwana Secretary for Native Affairs aile ku Kawambwa no kupita ku Chipili Mission, elyo nakuyapita ku Mporokoso ukuya ku Abercorn na ku Mpulungu, pa numa atandale Mtumu Tafua kwi Isoko. Akumeuye bachibusa wakwe abengi abakalanga ba Allan Chelemu, ababombele myaka iyingi mu nchito yabu Kalaliki wa mu Kamfulumeude, na ba Chishya, abo balekele fye nomba line imilimo ya bu Manshinge mukalamba ku Abercorn. Iyo alebwelela ku Kasama, Bwana Secretary for Native Affairs apitile aletandala ku Lunzuwa uko akumenye abasungu ba Bulimi nokutasha ba Dawson Mukupa pakupelwa imendulo ya B.E.M.

mwa Chizombwe. Ukusansa kuli ichi bakulile inanda iyashinguluka iyabana be sukulu pa Nsangu. Kwali ub'vangalo bwa mpila, umulimo wabashikauti, nobwangalo bwa pamulilo ichungulo, ne fikope fya "Cinema" fyasekeshe aba mu mushi pamo pene nabaiche, abalumendo.

Pa mulandu wakulongana kulya ukwali pa Nsangu abalumendo bachitile ukulongana kumbi ukunono pa Nondo ukufuma pa bushiku bwa 8 ukufika pa 16 umweshi wa June napa Mwambala ukufuma pa 10 ukufika pa 18 June. Pa Nondo umulimo walefwaikwa kukula itanga lya ng'ombe lya nsukulu lya sha-Mfumu ukwali ukupelwa ing'ombe shabulangililo amakumi abili. Ichi chachitilwe nabalumendo 38 pamo pene naba kafundisha babo. Infumu Nondo ine ya mushi yalyafwile pamo pene nabekashi bamushi balitashishche umulimo wachitilwe na balumendo kabili batemenwe ukuba nabo pa mulilo. Kwa Mwambala kwali abalumendo 30 naba kafundisha, balangile inshila shakubombela ka fyakulimina ifipya nechi chayafwile bashi mafamu. Pakubombela amashini yakutongola ing'anje mu mulungu umo batongwele isho umuntu ulebombela iminwe angaposapo imyeshi. Ba shi mafamu nomba baletasha bashikautu pantu babatongwele ing'anje ukulingana namasaka umwanda umo.

Ba Bwana E. C. Thomson babwele no nba line ukufuma ku chuti nokubu umulimo wabu "District Commissioner muchalo cha Mansa.

Mfumu nkalamba Chitimuku'u na Bedson Nkula naba Mulenga baile ndala ku Chinsali mukwipusha utumilindu tumo tumo mu musumba wa Mfumu Nkula.

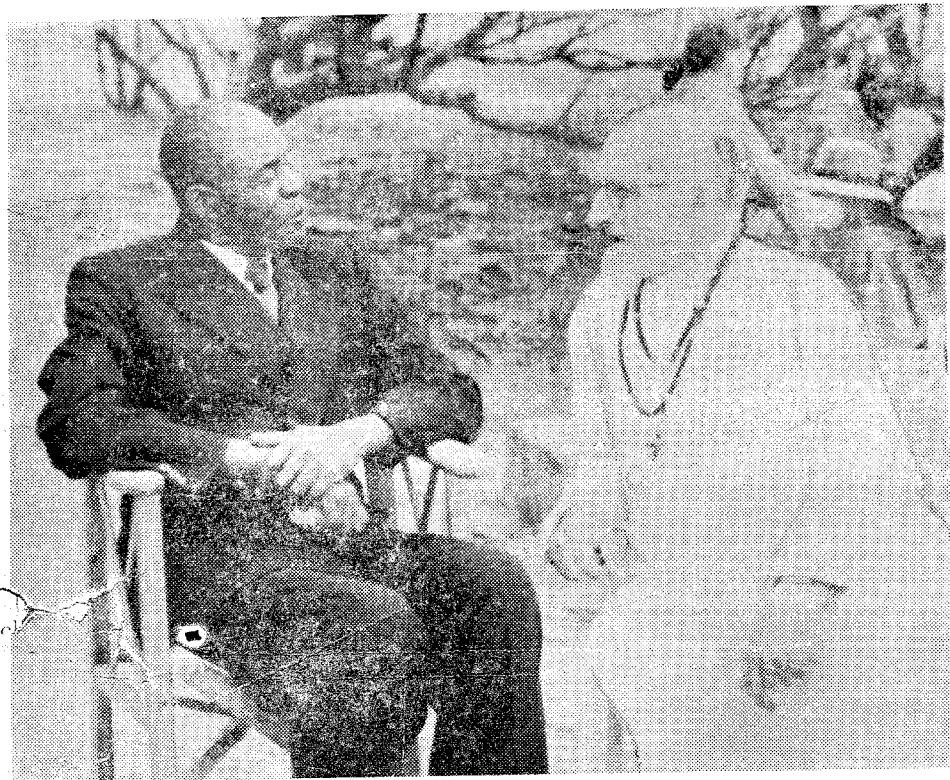
Iposhita Ofeshi limo ilipya ilalipya nokwisulwa pa Nsombo. Nachilandu ukuti ili poshita lili pakati ka chalo cha Bangweulu pamo pene nokubombela ifyalo fya ku mufundu ifili mupepi.

Pa Fort Rosebery pa nshita ya nom balekula ichipatala cha bantu bafita bombesha sana kabili kuli ishimo, aya makule yali nokupwa uyu mwa mweleisa. Elyo chikaba chakwafwa nganshi ku bena Africa.

Kuli ba Bwana abengi pa nshita abalelunga ingwena. Babelungila kuli mba wa Tanganyika na mu Lufu mu Chambeshi no Luapula. Ing'wele iyikalamba nganshi ukupimwa amakumi na chine konse konse yapikilwe Bwana umo bulya bushiku mu pepi chabu cha Mpulungu kulya abasungu bena Africa batemwa ukowa. Uku lungu kwa ng'wena ku kafwa abena Africa ukupususha imyeo iyingi.

Chabulanda ukutula Kalaliki wa "Infumu Native Treasury" nomba line kakwa pa mulandu wakwiba indala £93. Umubomfi uwaleangalika ifyo nobuteko na shi Chilye umo wa Tafana basangilwe nkuti indalama milandu balepoka ku bantu tabalolen shonse iyo, shimbi balebika mumatun yabo. Bonse babili balipelwa umulimo nokukakwa.

Ubulwele bwa mbwa ubushatala amoneka muno chalo cha Northern Province, nomba nabumoneka. Bwamon ku chalo cha Babwile ichasuntana chimana cha Mweru, kabili na bumon namu chalo chakwa Mununga ku Kawambwa. Ubu bulwele bwaletelwe kurpaka wa chalo, ukufuma mu chalo-panga, kabili ba Bwana, ba Dokotala. Ngombe bali ne milimo nganshi iya lwisha ubu bulwele. Imbwa ishyo shendauka endauka fye baleshipaya, kusletye shinono. Abantu batatu balifwa bulwele bwa nsamwa ne mbwa, ubu bulwele nomba naba buchinchimbi



## CIKOPE CHA MFUMU CHITIMUKULU NA FATHER ETIENNE

### Busanso bwa Nkalamo African Provincial Council.

District Commissioner wa kwi Isoka atweba ifya chitike ku kupwa kwa mweshi ya Kapundu Milimo (December). Ichintu chachitike ichakushipa ku kalamba ukwa bena Africa mu chalo cha Mfumu Mwinichifungwe. Umukote umo ali mwi bala na mukashi wakwe, elyo nkalamo yalimupshibile no kumuwisha panshi.

Umukashi pa kumona umulame wakwe muntangalalo ya nkalamo, nao bwangu bwangu asanshile nkalamo na kasembe pantu e chanso fye akwete, elyo alekomaula inkalamo ku mutwe na ku mabeya, nkalamo yakalipwe no ku kokokela umwanakashi no kumubika pali wiba. Umuntu umbi pa kumfwa inkuta no kumona abantu babili mu ntangalalo ya nkalamo, aishile no kuisansa ne fumo, ailasa palya pa menena umuchila. lelo ichi tachaichitile akantu nelyo kamo, elyo apopene ulya muntu e pakwikata ku muchila wa nkalamo alaitinta kuti aifumye pa bantu balya bali panshi. Nkalamo yasungwike pa miya ya aba bantu, elyo kabili yaimine yaikete naulya wine umuntu wa chitatu. Pa kumfwa inkuta ya bantu balya, umuntu umbi aishile ne mfuti ya chituli no kwipaya nkalamo.

Chilonganino cha lenga Mutanda icha African Provincial Council chalongene pa Kasama ukufuma pa 9th ukufika pa 11th June, 1953. Bashi Chilye 26 epo bali na ba kalanda abalandile niba Paramount Chief Chitimukulu, Senior Chief Mwamba, ba Donald Siwale B.E.M., ba D. L. Yamba M.L.C., ba Lakement Ng'andu, ba Ellie Chola na ba Samson Mununga. Ifingi ifya landilwepo fyali ifya kusekesha nganshi: nge fya kuleta ba Kombo kuno mwesu, nkalata sha kusonkele sabi, kusoselwako kwa Bena Africa mu Chilye chipanga mafunde (Legislative Council), mpiya shakwafwa indu-pwa, uku kumbukanya kwa fyalo (Federation), Filye fya mu ma Boma (District Councils), ukufumya basha Mfumu pa bufumu, ne mitengo ya fyakulya fya bantu.

Bwana Secretary for Native Affairs epo ali pa shakubalikapo shibili isha chilonganino no ku kutika ku fya landilwe. Pa bushiku bwalenga sshitatu, ilyo Bwana Provincial Commissioner talipo, ba Rev. Paul Mushindo ba bulile chifulo cha bu Deputy Chairman. Chilye ichi chili mupepi noku pwishishishe nshita ya chiko, elyo nakumfwiko knti kukaba ukusala na kumbi mu mwaka wa 1954.

## Ubwafya Mu Chalo Cha Bwaushi

Ifintu fyonse nomba fili bwino mu chalo cha Bwaushi apo isha-Mfumu ishi shatamfiwa pa bufumu: Mfumu nkalamba Milambo, Kasoma waku Bangweulu pamo pene na Mulakwa. Mfumu Milambo balimutamfya ukufuma mu chalo chakwe nomba ekala pa mushi umo mu chalo cha Mfumu Chungu. Kabili Mfumu Kasoma nao ali noku-fuma mu chalo chakwe akaya ikala ku bushilya bwa Bangweulu mu chalo chakwa Chiwanangala. Mfumu Mulakwa achili mu chifungo pa mulandu wakutinya umubomfi wa Kamfulumende umwina Africa nokweshia ukumuiwisha, nao pame pene akebwa ukufuma mu chalo chakwe panuma nga akakulwa mu chifungo uno mwaka. Kwali abantu abengi abakuchombolola Kamfulumende abaleyenda mu chalo cha Bwaushi nokubepa ubufi ukutulumuna imiti na yabantu. Umo uwa ba bantu ishina lyakwe ni John Musonda ayebele abantu abengi ukutila nomba line takwakabe mushili nangn fitulo fya manda ne fitumbi fya bantu fikalochiwa na mafuta ya "petrol". Uyu muntu nao alikandwa ali mu chifungo imyeshi pabula nokubombesha.

Papite nshita ilyo Bwana Provincial Commissioner alaile ukuti abantu ugababwekela ku musango wabo uwachumfwilo akepushisha umulandu uwalengele ukulishika kwa Bwaushi. No mulimo uyu uwakwipushisha nomba na upwa. Bakamboni tabalangile ichakusonta nangu ukushininkisha ukuti kwali ubuchushi ku bantu lelo kwasangilwe chimo nangu ifintu fibili ifinono napali ifi Kamfulumende aletontonkanyapo. Ukuteba nkuni kwalisuminishiwa kuli abo abekala pa Samtya mu pepi na "Forest Reserve" uko bakalalima imiti ya matabwa, naba Kapasu wa bulimi bonse mu chalo cha Bwaushi bali nokutamfiwa pa nchito. Ifintu ifingi fyalanga ukuti tababombele bwino naba Shamfumu bakepushiwa ukufwaya bambi abasuma. Kwali ukwikata abantu abo abashali namaka yakusekwila amabala yabo ne milandu imbi iyapalana neyi, kabili takwali butungulushi bwachishinka ukupelwa ku bena mishi ukubafwa ukusambilila imilimine isuma.

Nomba kuli isubilo lyakuti ubuteko bwasha Mfumu mu chalo cha Bwaushi bukakosa ku Mfumu shipya pakuti abena Africa bachalo ichi babombe ifintu fyonse bwino bwino, kabili chilefwaikwa ukuti aba bomfi bamo bamo bakatandala ku Musumba kwa Chitimukulu pakuti basambilile nokumona ifyo ubuteko kulya bwile pantanshi.

## Buteko Bu Kalamba Bwa Chibemba

ISHIWI LYA MFUMU

Tulechelela bonse la kabelenga wa iyashi lyesu. Mwi shina lya Mfumu nkalamba Chitimukulu ne Chilye chakwe, ndetotela mwe ba Bemba bonse abali kuno mishi nabali mu fyalo pa milimo yonse iyo mwabomba muli 1952 noku-subilo kutika mulebombesha na maka yenu yonse ukuchilapo muli uno mwaka wa 1953.

2. Ndi ne chimwenwe pa kumwishibisho kutika Ichilye cha Nchenje chidipinguulo kutika ukufuma pa bushiku bwa 1 January, 1953, ba Administrative Secretaries, balya tsuleito kutika Departmental Councillors, balingile ukutumwa mu fyalo fyonse fya ba Bemba nokwikala pa mushi wa Mfumu nkalamba ababa Treasury epo balefuma pakubomba mufyalo fya sha Mfumu shimbi shaikala mu chalo che Boma bayako. Kuno Kasama kwashala babili bekala kwa Chitimukulu, lelo bendauka mu fyalo fyaba sha Mfumu bambi bonse ababa mu chalo cha Kasama. Ku Mpika kuli uno ekala pa Chikwanda, ku Luwingu kuli uno ekala pa Shimumbi, kwa Mporokoso kuli uno ekala pa mushi wa Mfumu Mporokoso. Ku Chinsali nako uwakuyako inshita ino acili kuno kusambilikako tulimo tumo tumo alaswa aye nomba tise. Ba Administrative Secretary imilimo yabo yakwatwana ne sha Mfumu sha Chibemba mukwangalile milimo ya mu chalo yonse nokwesho kwafwako ishanfumu muna tontonkanyo yapya ukwesho ukulungika ukubomba uno Government alewaila ukufi ubuteko bwaba sha Mfumu bulole. Kabili ba Administrative Secretary, eba noku mone milimo yaba bonfi bonfi bambi nokutwala lupoti ku sha Mfumu, ku Boma naku buteko bukalamba ku Lubemba. Bambo ababomfi ba buteko bwa Chibemba muno Kasama abapwile imilimo yabo ukwabula akalema pali 15 years (imyake kumi na isano) balileke milimo yabo kabibi balepelwe chilamba cha milimo yabo icho beta ukutika Gratuity. Tulebatofela nokutika bakale umutende pa nuna yakubombelo mutunda wabo mu bufuma chumi.

### KUTASHIYA

Natutemwa ngansh ukwishiba ukuti Namfumu apele mendulo shapa bupyani kuli aba bantu:

Euel Nyirenda, Kalaliki mukadamba pe Isoka.

Kazimoto Kapinda, Mashinje mukalamba pe Isoka.

Lashon Mulenga, Mashinje mukalamba pa Luwingu.

Million Kashimwaye, Mashinje mukalamba pa Fort Rosebery.

Abena Africa aba nabapwisha imyaka iyingi iyakubombesha kabili nababomba

4. Ichilye Chikalamba chalisumina ukutika chilingile ukuba impanga ya miti iyapatulwa nokuchingililwa (Forest Reserve) mupepi naku Kasama pa mulandu wakutika ku ntanshi ngo musumba we Boma lya Kasama wakula, abantu abekala mu Kasama tabeshile maku chula kukufwaye nkuni ne miti ya kukutika. Abantu bambi baletonkanya kutika chintu chabipa nalimo niba Bwana balefwayo kupoke mpanga. Iyo ikuluba, ku ntanshi abana besu iba sangga takuli buchushi bwakufwaye fintu bakesatotela onse uwatontonkenye aya namo.

Ku Bulumbwa mu chalo cha Mfumu Nkalamba Chitimukulu, nako Ichilye nachipatula akapanga kama akamena imiti iyo balita Imyafi ukuti kabe ni Forest Reserve.

5. Abengi kuti batemwa ukufwaya ukutika nanomba tuchili tufwaya abakuya kuli bu shi mafwamu kuli Ngulula. Chifulo ichisuma sana, amenshi ayengi sana, no musebo usuma uwamotoka kabili ni mupepi naku Kasama uwakushitisha fyonse ifyo abantu balelima pa ma famu yabo. Inshita ino muti onse uwa mano alingile ukutontonkanye nshila ino iyakuitekelamo ngefyo iya bulimi mukuti alesange ndalama pa bwikele ukwabulo kuyo kutali. Onse umu Bemba, tebena Kasama beka iyo, kuti aisa nokwikala pali Ngulula nokulalima nokwesho kuiteko mwine eka.

6. Muli uno mwaka wa 1953, ubuteko bwa Chibemba bulefwayo mu Bemba onse ukubombesha na maka uko bonse uko ali, mu bulimi na mu milimo yonse yapusana pusana nokusonke misonko a kwe bwangu bwangu. Umuntu onse uwufwayo kumonefyo indalama asonka ku Treasury shibomba alingile ukwipusha Administrative Secretary uwa muchalo ekala nelyo Secretary Councillor kwa Chitimukulu. Kuti twatemwa sana ukulondolola fyonse iyo muti alefwayo kwishiba ifya ndalama nefyabuteko bonsefye ubwa chi Bemba. L.H. Ngandu Secretary Councillor.

umulimo wa chishinka mu Kamfulumende mu miputule iyalekana lekana mu "Province" uno.

Kabili tuletasha ba Kosam Kunda naba Misheck Chintu abo abele pa mulu ukupelwa umulimo wabu "African Administrative Assistant." Bonse babili nachibalinga ukuti baye pa mulu echelenga tuleteti babombe bwino mu mulimo wabo upya uyo ba kalaliki abachili panshi bakalalolekeshwa nokuemwa abo munshita iyi balefwaya ukubula ifulo fya ya mulu.

## Bupyani Bwa Kwa Namfumu Elisabeti II

Ufushiku lwa lengele shibili mu mweshi wa kapepo kakalamba kwali insansa ishingi ku bantu bonse abali muno chalo cha "Northern Province" pa bupyani bwa Kwa na Mfumu. Twali ne nsansa pakwishitika ukuti na Mfumu uwali umwache Talutu, pele tuba tumu pa menso ya bantu abachipidama abafumine mu fyalo iyalekana lekana nokuya longana mu musumba wa "London." Amubumba fya bashilikali yali sangilweko, nakafwala ifya kufwala ifyabeka ifya misango na misango, nabakalisha wa filimba baumbile mu mansa ulwimbo lwakuti Lesa apale na Mfumu. Ubu bushiku tabwakabwye kuli abo abashukile ukuti babemo mu Musumba.

Mu mapepala yonse mwakulabeleuga iyashi iyalembelwe naba C.S.M. Mwamba D.C.M. abatuminwe na Kamfulum ukuya ku London ukuya lolelesha ntya sefya nokufimona fyonse ifya lechitika na menso yabo.

Mu ma Boma yonse nga Kasama, Abercorn, Fort Rosebery, na Kawambwa kwali ukuchindikisha nokulanga umuchinshi kuli na Mfumu kuli basha Mfumu, ba chi Chilye na bantu bonse.

Pa Kasama pena ichintu ichikalamba ichiamonekepo kwali ukupepa pa Boma mwisamba lya mendela. Kwali ibumba lyabashilika aba Polisi, Bamesenja, nabashilika ba ku chifungo, bonse aba bale moneka fye ababusaka, nabashilika bakale eko bali naba iyala ne mendulo shabo. Abasungu bapala nana ne Mfumu nkalamba Chitimukulu ne cha Mfumu chonse ishi Bemba bahpo bonse. Na Bwana Provincial Commissioner ewali intungulishi. Kwali amapepo no lwimbo lwe palo lwalimbilwe, kwali nokwata ukukalamba. Imfumu nkalamba Chitimukulu yalimbile imiti ibili pakuti chibi chibukisi. Bayanfeshite ituni ne mendela. Kabili kwaliko ukalanga ifya bulimi, ukwangala umupila, ukabutuka ne nchinga, nokuchinda. Mu nshita fya chungulu elyo kwali ukupakisha ubwala ne nama bayakenye ku sha Mfumu naku bantu, pa nshita ino iyi kwali ukulanga ne mfuti shakuposa umulilo mumulu isho mu Chinjeleshi batila "Fireworks." Naku maboma yambi naku kwine kwali umusango wine nyu. Ubu bwena bwali ubushiku bukalamba kuli ifwe bonse.

### IFISHIBISHO

Mfumu nkalamba ne mfumu Munkonge nonba line baile ku njanji muku-shita ba motoka bakubombela abene milimo yabo. Babwela nokutemwa nganshi pa mulandu waba motoka wabo abapya.